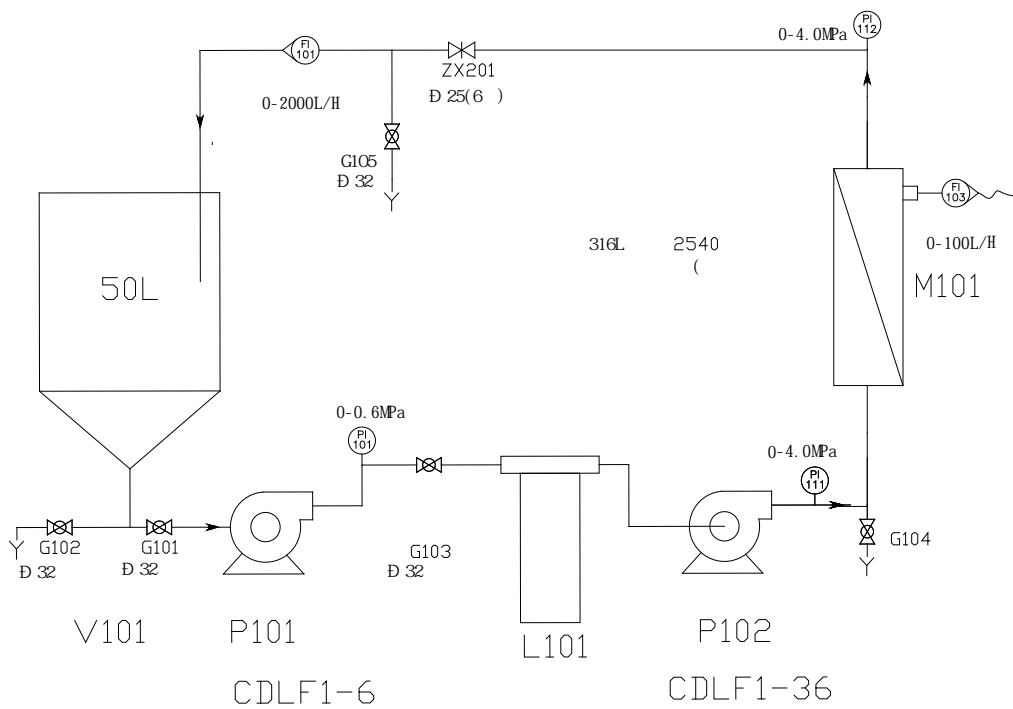


WTM-2540D



.....	2
.....	2
.....	3
.....	4
.....	4
.....	5
.....	6
.....	7

20Bar



1. ,
2. 5-10L ,
- 3.
- 25Bar
- 4.
- 5.
6. 2540 2.5 100L/H,
20—50L/H
7. 316L
- 8

2540	
	WTM-2540D
	2540
	1.77
	2.5Mpa
	5—45
	PH 1--14
	8L
	100L/H (0.8MPa)
	30—50L/h
	50—

1		50 L	SS304		1	
2		Q=1m ³ /H H=32m	SS304		1	
3		2900r/m 2. 2kw 380V			1	
4		Q=1m ³ /H H=200m 2900r/m	SS304		1	
5		2540	SS304		1	
6		300-400 2.5	TFM		1	GE DL2540
7		2. 2KW			1	Delta
8		25Bar	SS304		2	
9		0-100L/H			1	
10		0-2000L/H			1	
11		6	SS304		1	
12		6	SS304			
13			SS304		1	
14			SS304		1	
15					1	

1

2

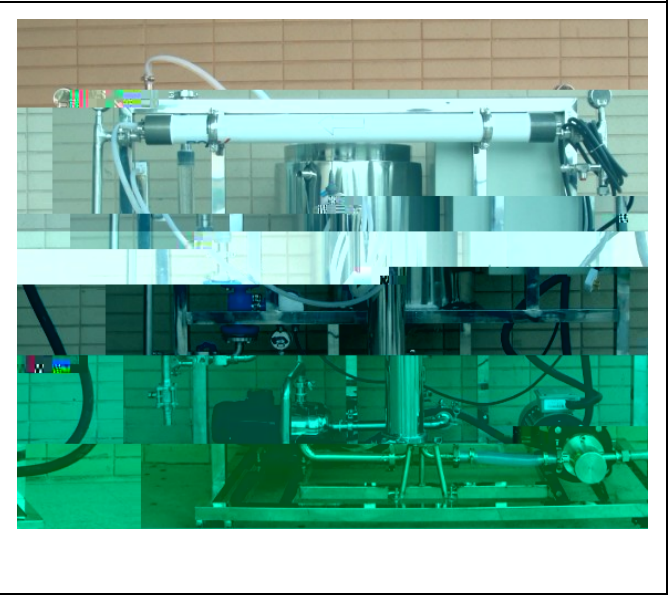
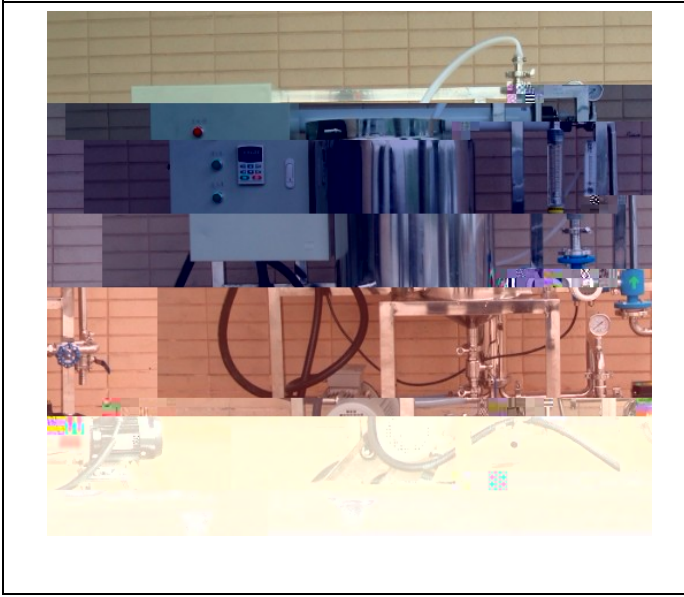
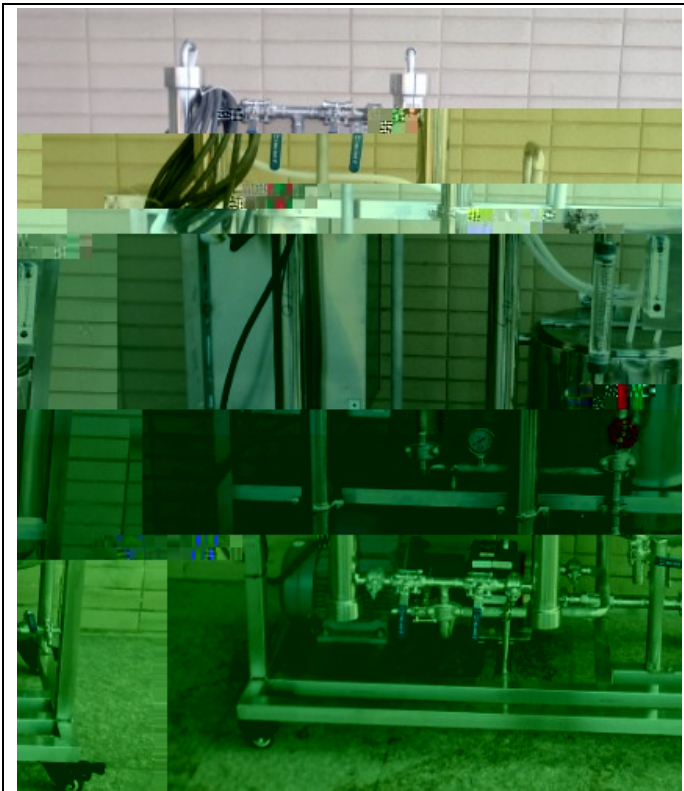
3 17%

2540



M202- BT an <</MCID 28 >>BDC /C5_1 1 Tf -5.05 -2.64 1%

A101-2540F		SE SG	PA	GE
------------	--	-------	----	----



**

**